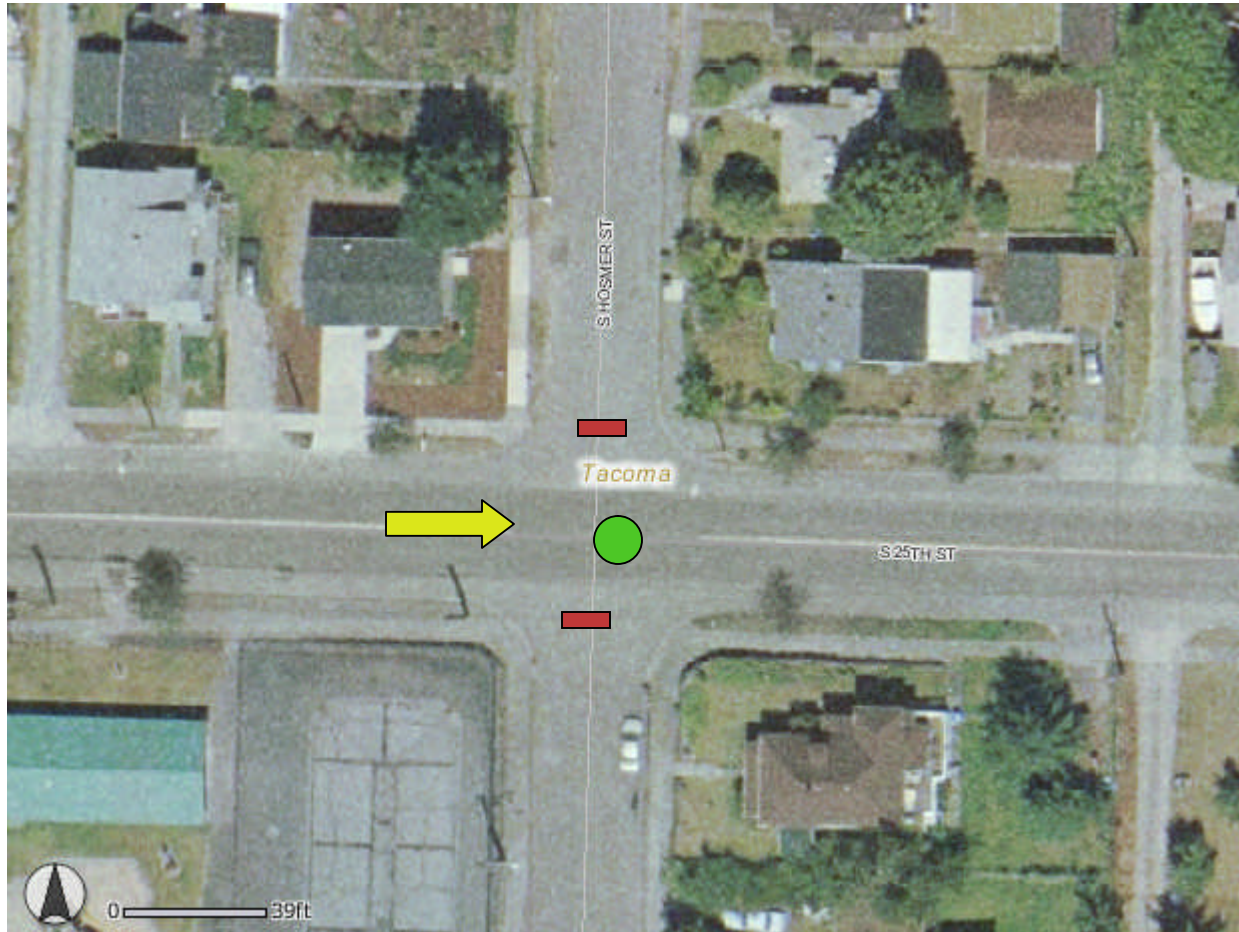


DO NOT STOP RUNNERS

- Use common sense when directing traffic and assisting drivers/runners. Some drivers will absolutely need to be on the course. Ask them to drive slow and yield for runners.
- There are instructions and a map of each position. Follow them to the best of your ability.
- If you need assistance, call the Command Post or ask one of the motorcycle officers.
- Green Circles are Volunteer Positions
- Blue Circles are Officer Positions
- Yellow Arrows are the direction the runners are traveling
- Orange lines are how your cones or barricades are to be set.
- Volunteers will not stand in the middle of the street but off to the side like school crossing guards and will enter the street to direct runners or contact drivers.
- Volunteers – do not argue with drivers call for an officer or contact one of the motor officers

DO NOT STOP RUNNERS



S 25th and Hosmer. Volunteer will place 2 cones along both red markings for a total of 4 cones. Only allow residents to drive on course during gaps in the runners. Advise drivers to go slowly and watch/yield for runners.